

SUN DRIVES
PTE LTD





Introduction

Established in 2022, SUN DRIVES Pte Ltd is a reputable procurement and supply chain company committed to delivering high-quality products and services. We specialize in catering to the specific needs of projects, offering a comprehensive portfolio that meets the diverse requirements.

Core Values

Customer-Centric Approach

Quality Assurance

Integrity and Transparency

Innovation and Adaptability

Mission: To be the leading provider of procurement and supply chain solutions, offering high-quality products that cater to diverse client needs. We aim to enhance industry efficiency and productivity through reliable and innovative solutions while upholding safety and sustainability standards.

Vision: To be the most trusted and reliable partner for industries seeking procurement excellence. We strive to expand our global footprint and continuously improve our offerings to meet evolving market demands.

Industries We Serve:

- Oil & Gas
- Petrochemicals & Refineries
- Marine & Shipbuilding
- Pharmaceuticals
- Warehouse
- Power Generations & Utilities
- Food Manufacturing
- Mining & Minerals

With our dedicated sales and customer support, global sourcing and procurement specialists, inventory and warehouse management, and logistics personnel, we provide comprehensive source-and-supply services tailored to your project needs. Choose SUN DRIVES Pte Ltd for reliable solutions, competitive pricing, and timely deliveries.

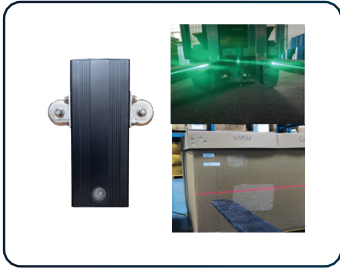
FORKLIFT SAFETY SYSTEM

Model: SDFSML – Forklift Side Mounted Light



- Wavelength: 638nm/520nm
- Operating Voltage: 9 – 80Vdc
- Operating Current: 0.28A @ 13.5Vdc
- Power Consumption: 200mW(Red); 30mW(Green)
- Size: 9.7*29.7*28mm
- IP Rating: IP67
- Weight: 0.28kg
- Housing: Die Cast Aluminum – Inside copper
- Lens: Automotive Optical Grade, Hard-Coated Polycarbonate
- Function: Alerting, Positioning
- Mounting: Strong Magnet

Model: SDFGS – Fork Guidance Systems



- Wavelength: 638nm/520nm
- Power Consumption: 100mW(Red); 30mW(Green)
- Size: 6*4*18cm
- IP Rating: IP65
- Weight: 0.35kg
- Housing: Die Cast Aluminum – Inside copper
- Function: Alerting, Positioning
- Mounting: Strong Magnet
- 3.7V rechargeable Nickel Metal Hybrid Batteries
- RF controls allow enhanced operator control of the laser unit

Model: SDFTL – Forklift Truckspot Light



- Power: 20W
- Operating Voltage: 9 – 80Vdc
- Chip: Cree
- Lumen: 2000lm
- Size: 23*5.5*6cm
- IP Rating: IP65
- Weight: 1.1kg
- Housing: Aluminium
- Projection Distance: 5 – 8m
- Beam Angle: 20 degree

Model: SDFRZL – Forklift Red Zone Light



- Light source: 6pcs*3w
- Operating Voltage: 10 – 80V DC
- Reverse polarity protected
- Double insulated silicon rubberized wire, can bear very low & high temperature
- Color: Blue or Red
- Material: Aluminium die-cast housing, PC cover, Stainless steel bracket
- Working environment: -40°C- +80°C
- Optional beam: Line beam
- Life time: >50000h

Model: SDFAZL – Forklift Arc zone Light



- Light source: 15w Cree
- Operating Voltage: 10-80V DC
- Reverse polarity protected
- Double insulated silicon rubberized wire, can bear very low & high temperature
- Color: Blue or Red or Green
- Material: Aluminium die-cast housing, PC cover, Stainless steel bracket
- Working environment: -40°C- +80°C
- Optional beam: Arch beam
- IP67

FORKLIFT SAFETY SYSTEM

Model: SDFBL – Forklift Big Blue Light



- Light source: 9pcs*3w
- Operating Voltage: 10 – 80V DC
- Led power: 27W
- Reverse polarity protected
- Color: Blue or Red
- Material: Aluminium die-cast housing, PC cover, Stainless steel bracket
- Working environment: -40°C- +80°C
- Optional beam: Spot beam
- Life time: >50000h
- IP68/CE

Model: SDFAL – Forklift Blue/Arrow Light



- Light source: High-power Cree LED 2 pcs*5w
- Operating Voltage: 10-80V DC
- Reverse polarity protected
- Double insulated silicon rubberized wire, can bear very low & high temperature
- Color: Blue or Red
- Material: Aluminium die-cast housing, PC cover, stainless steel bracket
- Working environment: -40°C- +80°C
- Optional beam: Spot/Arrow beam
- Life time: >50000h
- IP68/CE

Model: SDFBL – Forklift Beacon Light



- 5W 1W for each 5pcs*1w/9W 0.3W for each 30pcs*0.3w
- Voltage: 10-110V DC
- PC Cover and base
- Cover color: Amber, Clear, Blue
- LED color: White, Blue, Red
- Magnet base and warning buzzer optional/Warning buzzer optional
- Working environment: -30°C- +65°C
- IP65/CE

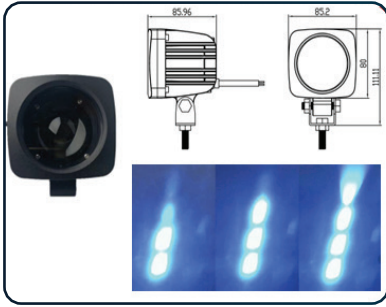
Model: SDFL – Laser Warning Light



- Wavelength: 638nm/520nm
- Operating Voltage: 9 – 80Vdc
- Operating Current: 0.28A @ 13.5Vdc
- Power Consumption: 100mW(Red); 30mW(Green)
- IP Rating: IP67
- Weight: 0.3kg
- Housing: Die Cast Aluminum – Inside copper
- Lens: Automotive Optical Grade, Hard-Coated Polycarbonate
- Function: Alerting, Positioning
- Mounting: Strong Magnet

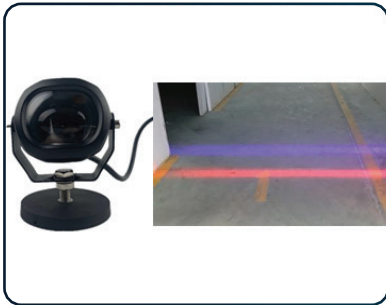
FORKLIFT SAFETY SYSTEM

Model: SDBFL - 4 Bluespot Flash light



- Power Consumption: 20w
- 10-110V DC
- Size: 85*85*80cm
- IP Rating: IP67
- Weight: 0.65kg
- Housing: Die Cast Aluminum
- Function: Alerting, Positioning
- Beam: Blue spot flash
- -45 ~85°C

Model: SDFLL - Forklift Line Light



- Power: 10W
- Operating Voltage: 9 - 80Vdc
- Chip: Cree
- Size: 23*5.5*6cm
- IP Rating: IP67
- Weight: 0.3kg
- Housing: Aluminium
- Color: Red or Blue

Model: SDFTL - Forklift Tail Light



- DC12/24V
- 120cm
- White = Drive forward, Red = Drive backwards
- IP67
- Function: ST/T/DI/Reverse/Reflex
- CE

CRANE SAFETY SYSTEM

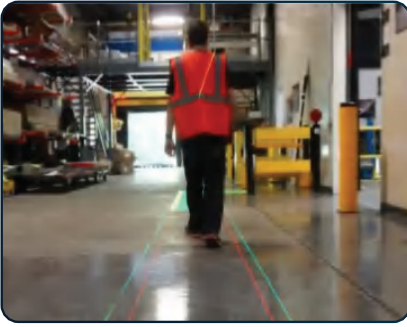
Model: SDCWL - Crane Warning Light



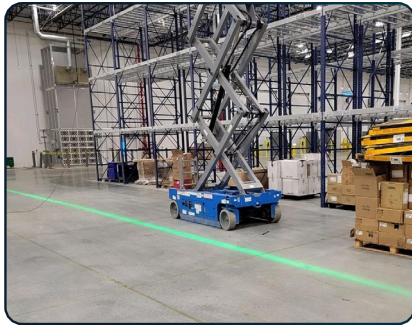
- Power: 120 Watts (Blue) - 72 Watts (Red)
- Voltage: 9-36V DC
- Lumens: 12000 lm - 8400 lm
- LEDs: 24 (Cree LED)
- LED color temperature: 6000K
- Beam Type: Pencil beam
- Working life: 50000 hours
- Size: 9" X 3.9" X 9.2" (229 X 98 X 234 mm)
- Waterproof: IP67
- Working temperature: -40°C to 85°C
- Material: Aluminum die-cast housing.
- Adjustable mounting bracket: 150 degree up/down.
- Cable Length: 3.3 meters (10').

WAREHOUSE SAFETY

MODEL: SDFSL - LASER LIGHT FOR WAREHOUSE

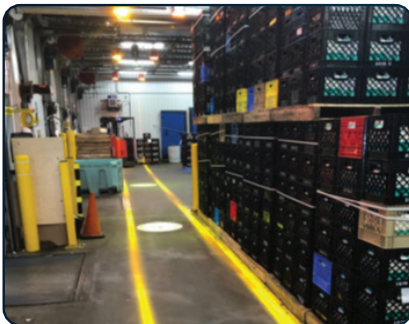


- Alerting, Positioning
- Green power 0.8W
- 10-80VDC, 100-240VAC
- IP67 Rated
- Projection Type-Line
- MTTF - 10000 hours
- Size - 10.1*4.4*6cm
- Weight - 0.2kg



MODEL: SDLS - VIRTUAL LED LIGHT FOR WAREHOUSE

MODEL: SDLS100W



- Power - 100W
- Alerting, Positioning
- 100 - 240VAC
- IP65 Rated
- Projection Type - Line
- MTTF - 30000 hours
- -20 to 50 °C
- 15000 lm
- Size - 15*14*9cm
- Weight - 4kg
- Best installation height - 3-7m

MODEL: SDLS200W

- Power - 200W
- Alerting, Positioning
- 100 - 240VAC
- IP65 Rated
- Projection Type - Line
- MTTF - 30000 hours
- -20 to 50 °C
- 20000 lm
- Size - 39*19*14cm
- Weight - 10kg
- Best installation height - 7-15m



VIRTUAL SIGN PROJECTORS

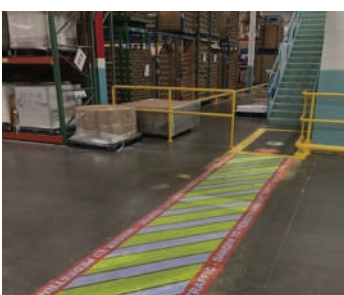


Model	SDP-01	SDP-02	SDP-03
Power	80w - 150w	150w - 240w	300w - 350w
Voltage	AC110V - 220V	AC110V - 220V	AC110V - 220V
Power Type	Meanwell Power	Meanwell Power	Meanwell Power
Projection Distance	15-20M	40-70M	90-100M
IP Rate	IP65	IP65	IP65
Operating Temperature	-30°C to 50°C	-30°C to 50°C	-30°C to 50°C
Life Time	30000 hours	30000 hours	30000 hours
Lumens	7200 lm	17000 lm	30000 lm
Size	26*22*14CM	28*25*24CM	40*25*35CM
Weight	4kg	6.7kg	8kg
Housing Material	Aluminium Alloys	Aluminium Alloys	Aluminium Alloys

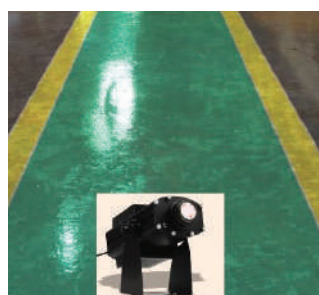


Five advantages compared to the traditional Sickers safety signage:

- No human capital investment required.
- No loss in productivity.
- (shutdown of the facility or surface preparation).
- Longer service life.
- No additional maintenance required.



Crossways



Pathways



Virtual Signages

ALUMINIUM BOATS

Aluminium Floor Inflatable Boat



- Total Length: 4200mm
- Inside Length: 2800mm
- Total Width: 1800mm
- Tube Dia: 450mm
- No .Of Chambers: 4+1 Keel
- Capacity: 6-8 Persons
- Loading Capacity: 0.8 T
- Power: 25 HP
- Speed: 6-8 knots
- Floor: Wood/Aluminium
- Class: IRS/ Lloyds

Aluminium Fire Rescue & Survey Boat



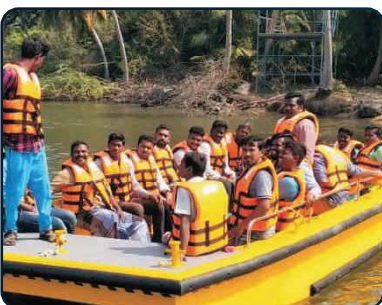
- Length (OA): 5500mm
- Width (OA): 2600mm
- Depth: 0.900mm
- Draught: 0.400mm
- Material: 5083 H111/321 Aluminium Alloy
- Material Thickness: 4mm
- Power: 40HP Petrol OBM
- Speed: 12-14 knots
- Capacity: 8+2 Pax
- Loading Capacity: 1.2 T
- Class: IRS/Lloyds

Aluminium Heavy Duty Speed Boat



- Length (OA): 5250mm
- Width (OA): 1800mm
- Depth: 0.950mm
- Draught: 0.245mm
- Material: 5083 H111/321 Aluminium Alloy
- Material Thickness: 4mm
- Power: 40HP Petrol OBM
- Speed: 15-18 knots
- Capacity: 6+2 Pax
- Loading Capacity: 1.2 T
- Class: IRS/Lloyds

Aluminium Punt Boat



- Length (OA): 5500mm
- Width (OA): 2500mm
- Depth: 0.750mm
- Draught: 0.400mm
- Material: 5083 H111/321 Aluminium Alloy
- Material Thickness: 4mm
- Power: 40HP Petrol OBM
- Speed: 8-10 knots
- Capacity: 16+2 Pax
- Loading Capacity: 1.8 T
- Class: TBA/TBD

ALUMINIUM BOATS

Aluminium Glass Bottom Boat



- Length (OA): 7000mm
- Width (OA): 2400mm
- Depth: 1000mm
- Draught: 0.300mm
- Material: 5083 H111/321 Aluminium Alloy
- Material Thickness: 4mm
- Power: 15HP Petrol OBM
- Speed: 6-8 knots
- Capacity: 10+2 Pax
- Loading Capacity: 1.4 T
- Class: IRS/Lloyds

Aluminium 12 Pax Boat



- Length (OA): 7000mm
- Width (OA): 2400mm
- Depth: 1000mm
- Draught: 0.300mm
- Material: 5083 H111/321 Aluminium Alloy
- Material Thickness: 4mm
- Power: 60HP Petrol OBM
- Speed: 12-15 knots
- Capacity: 10+2 Pax
- Loading Capacity: 1.4 T
- Class: IRS/Lloyds

Aluminium Fire Rescue Boat

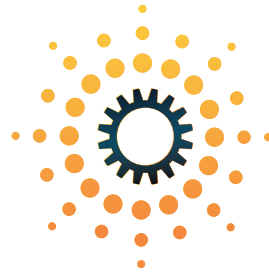


- Length (OA): 8200mm
- Width (OA): 2700mm
- Depth: 1600mm
- Draught: 0.400mm
- Material: 5083 H111/321 Aluminium Alloy
- Material Thickness: Hull Bottom: 6mm / Side Plate: 5mm
- Power: 2 x 200 HP Petrol Outboard
- Speed: 34-36 knots
- Capacity: 10+2 Pax
- Loading Capacity: 1.2 T
- Class: TBA/TBD

Aluminium Ambulance Boat



- Length (OA): 8500mm
- Width (OA): 3400mm
- Draught: 0.650mm
- Material: 5083 H111/321 Aluminium Alloy
- Material Thickness: Hull Bottom: 6mm / Side Plate: 5mm
- Capacity: 2 Person + 2 Crew
- Power: 2 x 150 HP Petrol Outboard
- Speed: 20-25 knots (Light Ship)
- Fuel Tank: 700 Ltrs
- Water Tank: 100 Lts
- Vessel Crew: 02
- Medical Crew: 04
- Class: TBA/TBD



Sun Drives Pte Ltd

101 Cecil St,
#20-11 Tong Eng Building,
Singapore 069533
Ph.No: +65 8890 7032
Email: sundrivespteltd@gmail.com

Partner: Garutmaan Enterprise

**A1-35-3A, i-SOHO i-City, Selangor Golden Traingle
40000 Shah Alam, Selangor | +6013-6347350 / +6014-9028508**